



Performance Flooring

Color Portfolio | Selection Guide

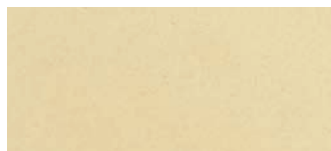
Customer Service 800.433.9517
Technical Service 800.243.6739
www.BuildingSystems.basf.com

BASF Corporation | Building Systems
889 Valley Park Drive
Shakopee, Minnesota 55379

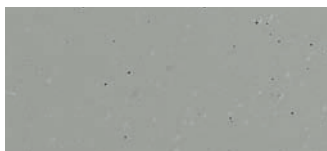
UCRETE®

All of the color reproductions are intended to provide an indication of color. Actual color and texture of products may vary from those shown in brochure. Applied samples and test patches are recommended for color matching and final approvals.

Pigments



Cream



Gray



Green



Blue



Red

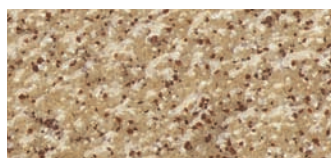


Charcoal



Black

Aggregate Blends – HP/Q



Cream



Red



Gray

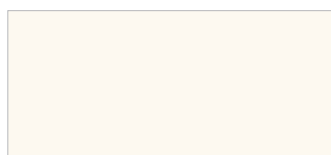


Green



Colors below serve only as a visual guide for initial selection of color. It is important to note that the colors seen will vary depending on your monitor settings, as well as by the specific settings for your color printer, should you print the results after your search. See your BASF distributor for actual color samples.

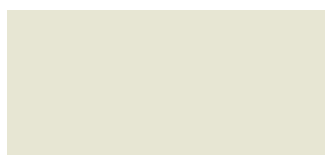
Pigments *(For use in SRS Degadur® Flooring Systems)*



White



Light Silver Gray



Light Stone



Safety Yellow



Light Beige



Dark Stone



Buff



Dark Gray



Green



Blue



Red



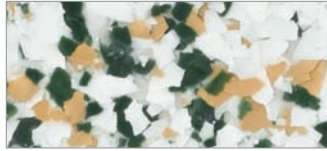
Black

Decorative Flake Blends *(For use in Selby® and SRS Degadur® Flooring Systems)*

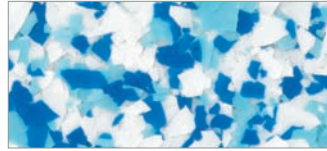
*(Custom flake blends are available upon request)
(Various flake sizes available)*



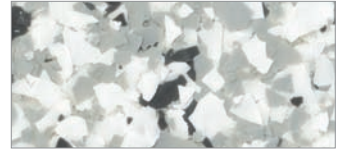
Sandstone



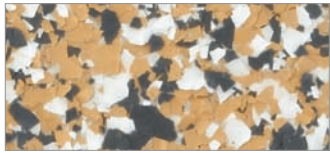
Nordic Green



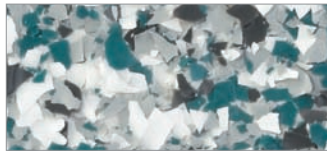
Seamist



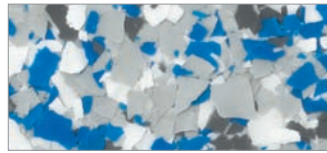
Limestone



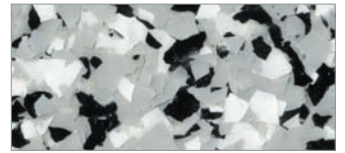
Buckskin



Aztec Marble

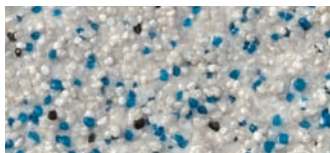


Cobalt Blue



Granite

Decorative Quartz Aggregate Blends *(For use in Selby® and SRS Degadur® Flooring Systems)*



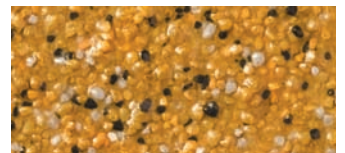
Arctic Ice (CQ 13)



Cool Red (CQ 2)



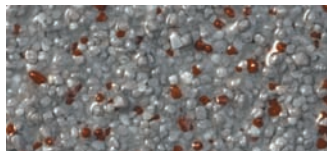
Sunstone (CQ 3)



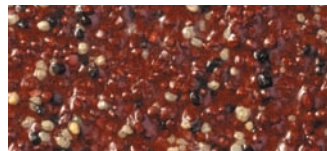
Harvest Moon (CQ 7)



River Rock (CQ 1)



Cape Cod Gray (CQ 4)



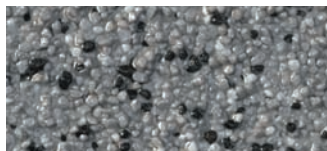
Garnet (CQ 8)



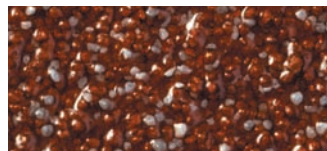
Adobe (CQ 10)



Emerald (CQ 11)



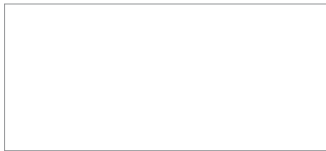
Smoke (CQ 5)



Scarlet Gray (CQ 9)

SELBY®

Finishes



White



Light Tan



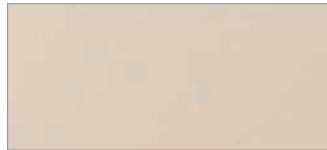
Safety Yellow



Gray



Light Gray



Tan



Red



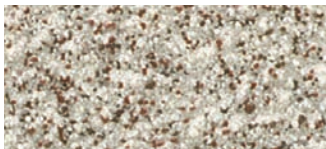
Black

SELBY®

Selbatwede Decorative Quartz Aggregate Blends

All of the color reproductions are intended to provide an indication of color. Actual color and texture of products may vary from those shown in brochure. Applied samples and test patches are recommended for color matching and final approvals.

(Available in broadcast and trowel grades)



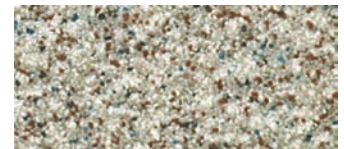
11



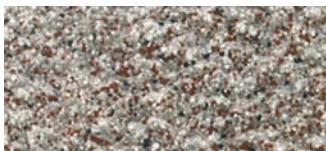
56



46



58



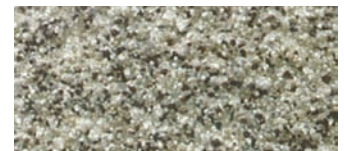
52



47



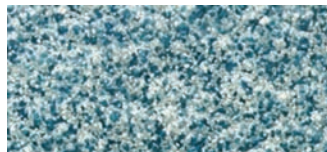
53



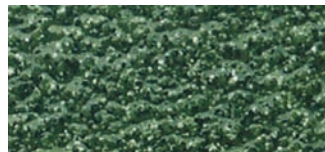
17



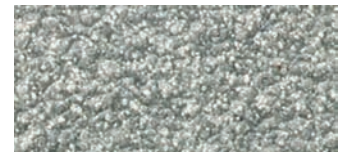
55



49



50



54

BASF Corporation | Building Systems

889 Valley Park Drive

Shakopee, Minnesota 55379

www.BuildingSystems.BASF.com

Customer Service 800.433.9517

Technical Service 800.243.6739

LIMITED WARRANTY NOTICE. Every reasonable effort is made to apply BASF exacting standards both in the manufacture of our products and in the information which we issue concerning these products and their use. We warrant our products to be of good quality and will replace or, at our election, refund the purchase price of any products proved defective. Satisfactory results depend not only upon quality products, but also upon many factors beyond our control. Therefore, except for such replacement or refund, BASF MAKES NO WARRANTY OR GUARANTEE, EXPRESS OR IMPLIED, INCLUDING WARRANTIES OF FITNESS FOR A PARTICULAR PURPOSE OR MERCHANTABILITY, RESPECTING ITS PRODUCTS, and BASF shall have no other liability with respect thereto. Any claim regarding product defect must be received in writing within one (1) year from the date of shipment. No claim will be considered without such written notice or after the specified time interval. User shall determine the suitability of the products for the intended use and assume all risks and liability in connection therewith. Any authorized change in the printed recommendations concerning the use of our products must bear the signature of the BASF Technical Manager. This information and all further technical advice are based on BASF's present knowledge and experience. However, BASF assumes no liability for providing such information and advice including the extent to which such information and advice may relate to existing third party intellectual property rights, especially patent rights. In particular, BASF disclaims all WARRANTIES, WHETHER EXPRESS OR IMPLIED, INCLUDING THE IMPLIED WARRANTIES OF FITNESS FOR A PARTICULAR PURPOSE OR MERCHANTABILITY. BASF SHALL NOT BE RESPONSIBLE FOR CONSEQUENTIAL, INDIRECT OR INCIDENTAL DAMAGES (INCLUDING LOSS OF PROFITS) OF ANY KIND. BASF reserves the right to make any changes according to technological progress or further developments. It is the customer's responsibility and obligation to carefully inspect and test any incoming goods. Performance of the product(s) described herein should be verified by testing and carried out only by qualified experts. It is the sole responsibility of the customer to carry out and arrange for any such testing. Reference to trade names used by other companies is neither a recommendation, nor an endorsement of any product and does not imply that similar products could not be used.